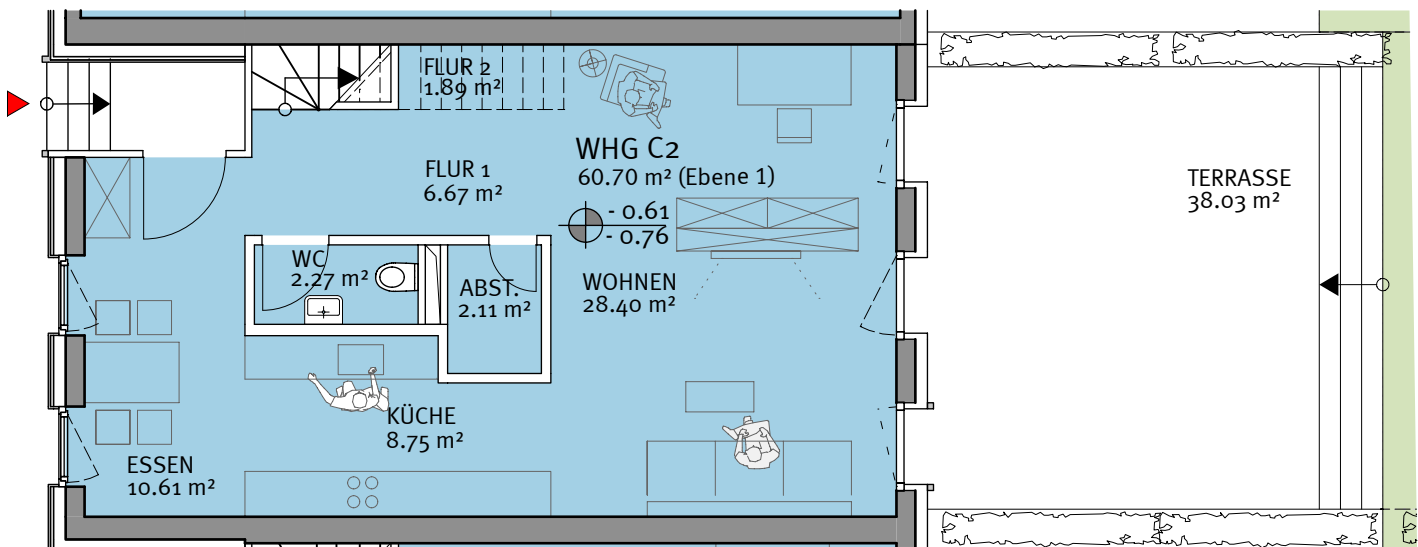


# WHG C2

## Haus C EG

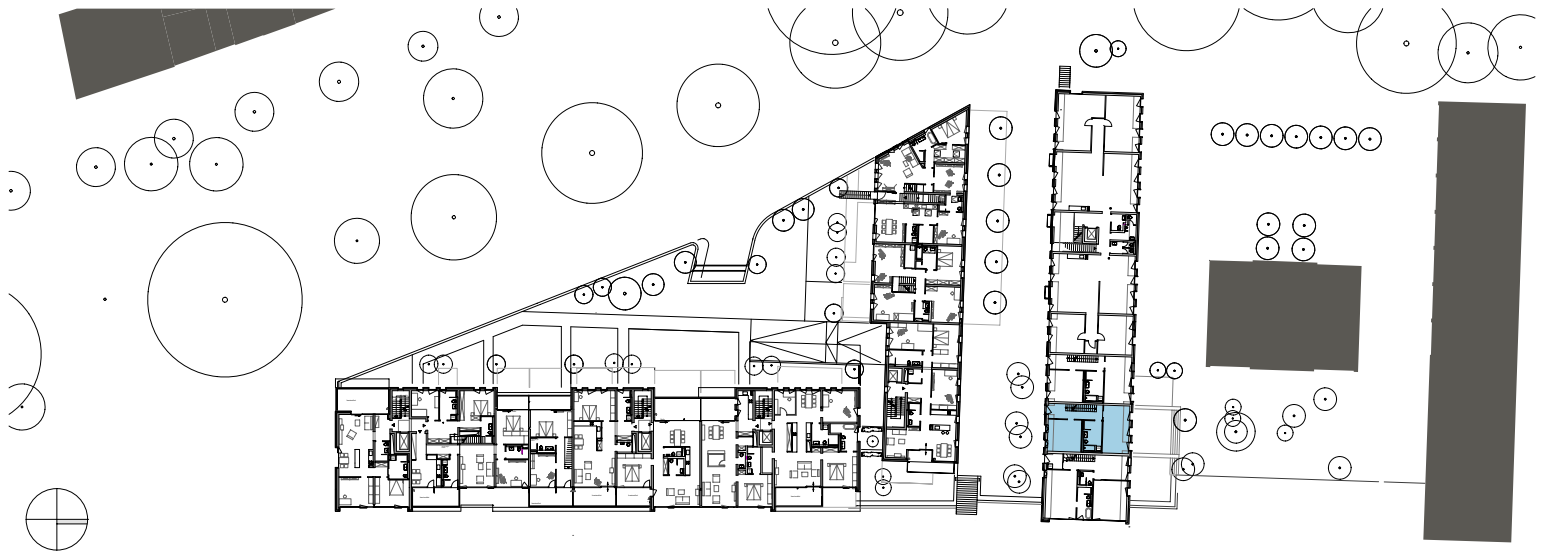
|                     |                      |
|---------------------|----------------------|
| WF Ebene 1          | 60.70m <sup>2</sup>  |
| Terr./Eing. (38,03) | 19.02m <sup>2</sup>  |
| WF Ebene 2          | 55.16m <sup>2</sup>  |
| Raumhöhe unter 2m   | 9,61m <sup>2</sup>   |
| WF Ebene 3          | 14.66m <sup>2</sup>  |
| Raumhöhe unter 2m   | 21,01m <sup>2</sup>  |
| Fläche              | 180,16m <sup>2</sup> |



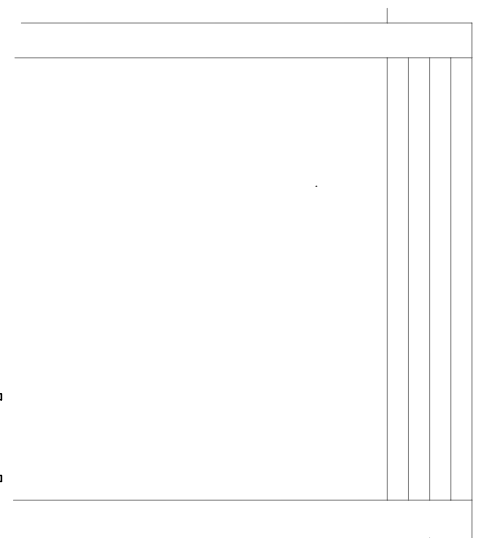
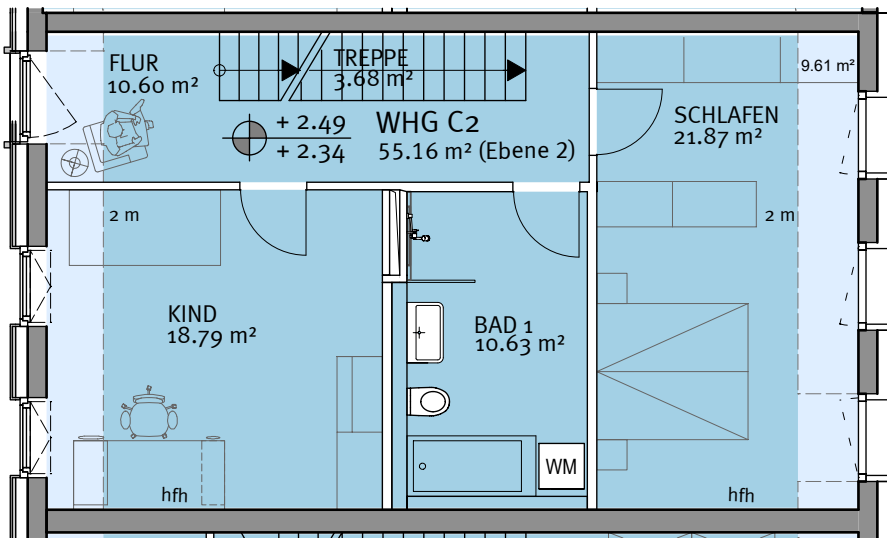
Änderungen vorbehalten | Balkone sind nur anteilig berechnet

Planstand 20.10.2023

1cm = 1m



**WHG C2**  
 Haus C 1.OG  
 (Ebene 2)



Änderungen vorbehalten | Balkone sind nur anteilig berechnet

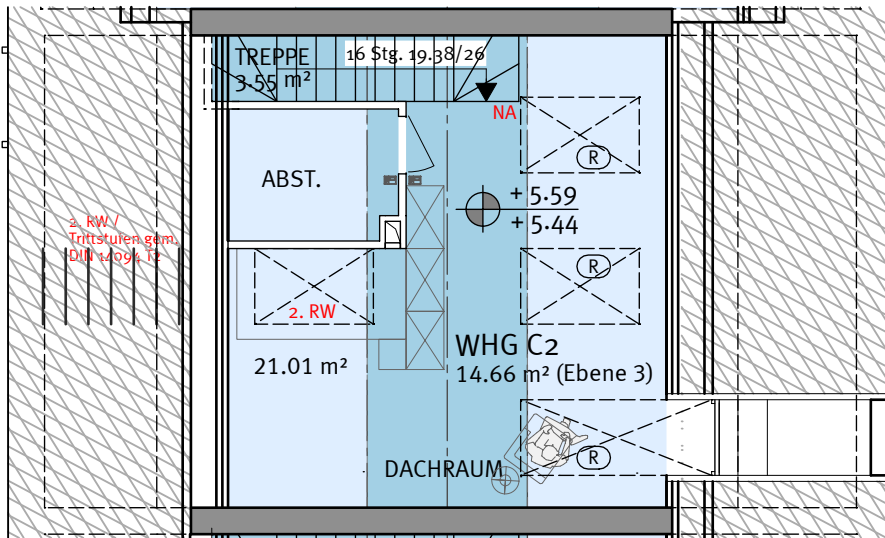
Planstand 20.10.2023

1cm = 1m

1cm = 1m



**WHG C2**  
**Haus C 2.OG**  
 (Ebene 3)



Planstand 20.10.2023 | Änderungen vorbehalten | Balkone sind nur anteilig berechnet

1cm = 1m